

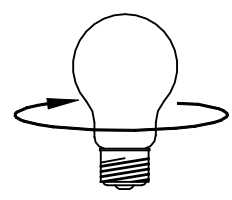
REVELATION

by UTTERMOST

ASSEMBLY INSTRUCTIONS

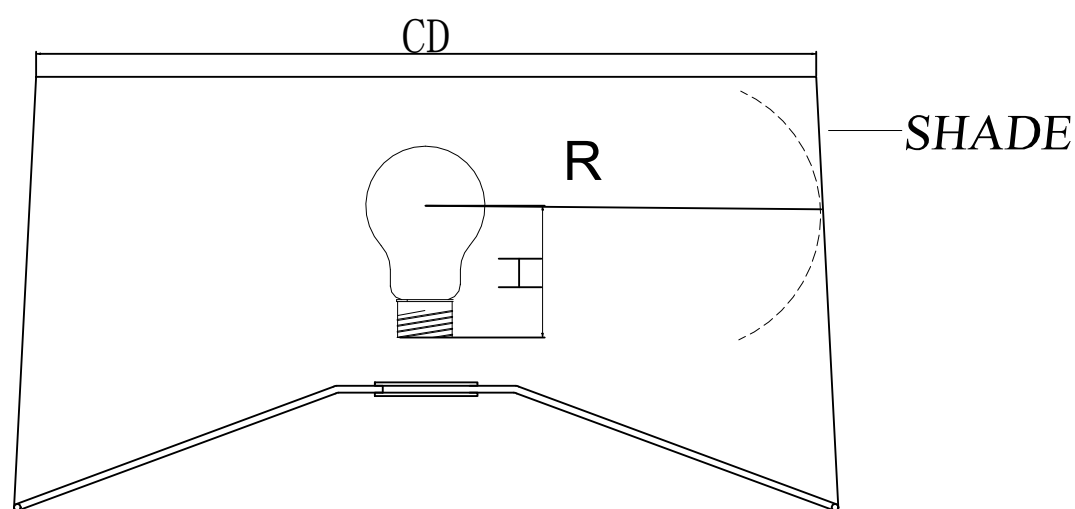
Assembly Instruction

STYLE NO.: R30130



150W TYPE A
(NOT INCLUDED)

Socket Ring

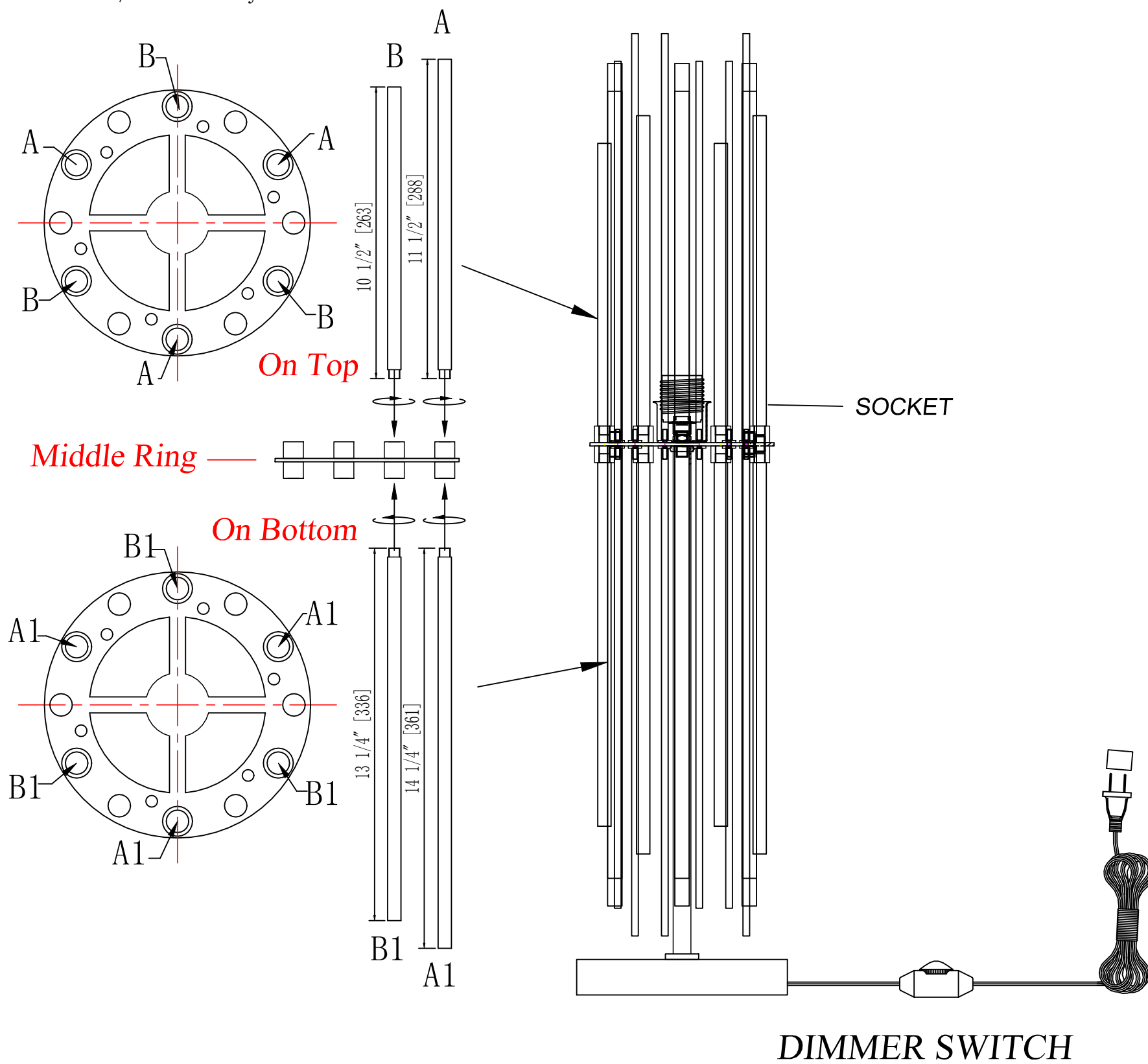


#A:288mm/3PCS Acrylic rods
#B:263mm/3PCS Acrylic rods
#A1:361mm/3PCS Acrylic rods
#B1:336mm/3PCS Acrylic rods

1. Take the parts carefully out of the carton, and place them on a flat surface, make sure that the parts will not be damaged.

2. Screw the #A and #B acrylic rods on top of the middle of ring, and screw the #A1 and #B1 acrylic rods on bottom of the middle of ring.

3. Place the shade onto the socket, then screw the socket ring clockwise onto the socket until the shade is secured.



CAUTION: IN ACCORDANCE WITH THE UL REGULATION, THE SHADE SHOULD BE OPEN TOP & OPEN BOTTOM AND "CD" IS BIGGER THAN OR EQUALS TO 4½", "R" IS NOT SMALLER THAN 4¾" OR MAY CAUSE FIRE. "H" IS 3¼".

To clean, wipe with soft dry cloth.

NOTE: THE DRAWING OF THE LAMP BODY IS FOR REFERENCE ONLY.