

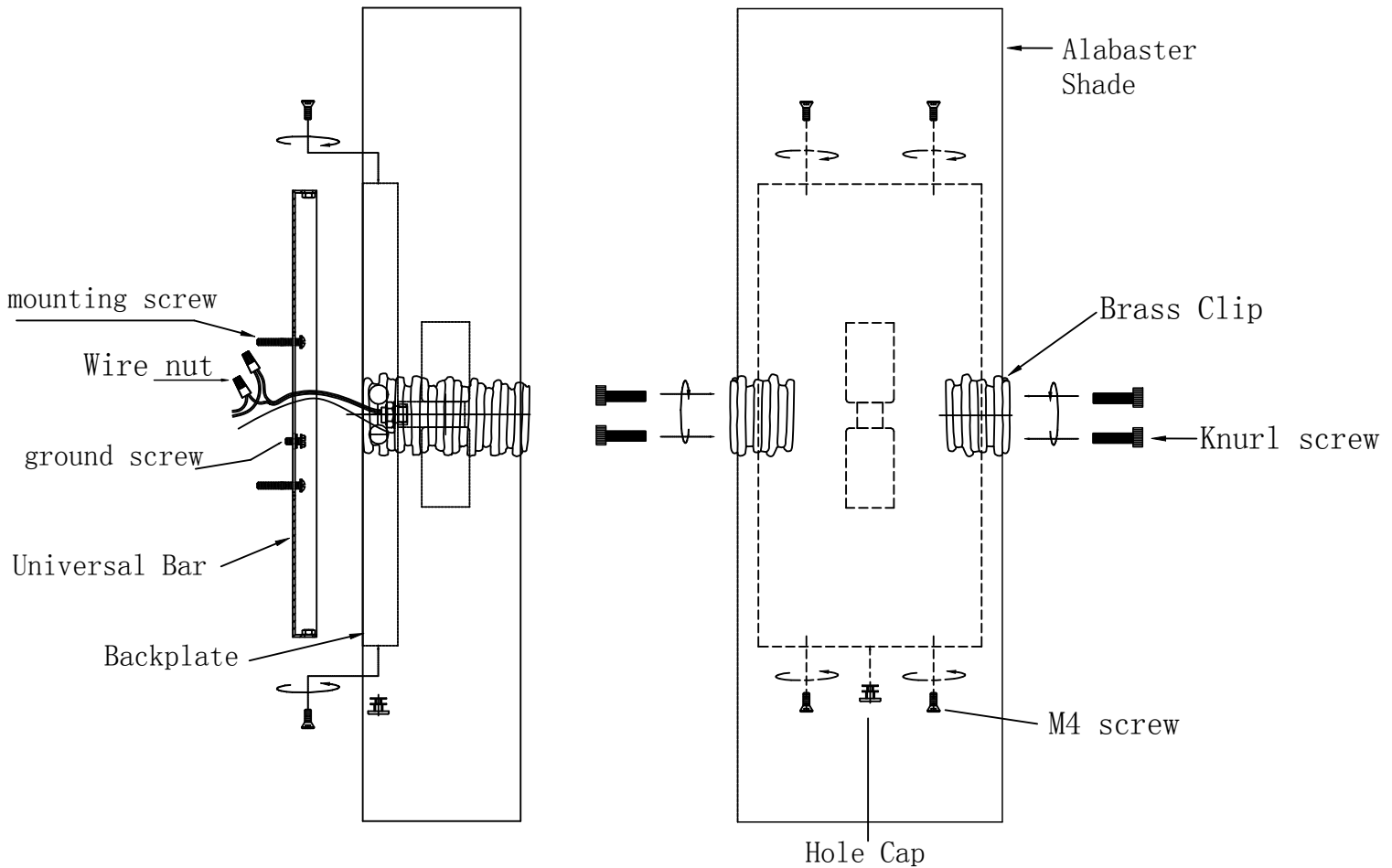
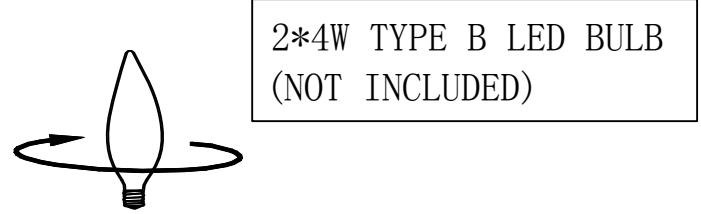
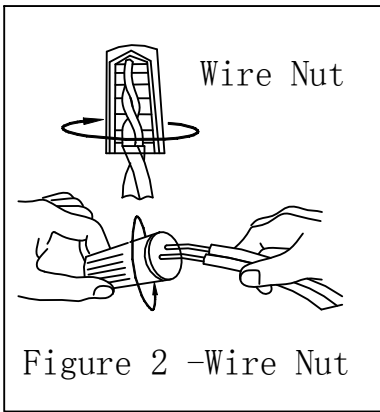
REVELATION

by UTTERMOST

ASSEMBLY INSTRUCTIONS

Illustration for Fixture version

ITEM NO.:R22558



REVELATION

by UTTERMOST

ASSEMBLY INSTRUCTIONS

Parts and Hardware List

ITEM NO: R22558

A.	Hole Cap	1PC
B.	M4 Screw	4PCS
C.	Universal Bar	1PC
D.	Mounting Screw	2PCS
E.	Green Ground Screw	1PC
F.	Wire Nut	3PCS
G.	Hole cap	1PC
H.	Knurl Screw	4PCS

WARNING: BEFORE INSTALLING, make sure the electricity supply is shut off to avoid a possible electric shock. We suggest a licensed electrician for all installations.

1. Carefully remove the parts and hardware from the carton.
2. Fasten the Universal bar onto the Outlet Box using the mounting screw .
3. Install both ground wires in the Universal bar with the Green Ground Screw supplied.
4. Place the white wire, ribbed or tinted wire evenly against the white wire from the outlet box and place the black, smooth or un-tinted wire evenly against the black wire from the outlet box. (Connecting the Wires - See Figure 2)
5. The brass clips have already glued with the alabaster shade, please use the knurl screws to lock the alabaster shade with backplate together in brass clips position tightly.
6. Attach the backplate to fix universal bar, and secure with the M4 screws.
7. Install 2*4 Watt max, Type B LED bulb (NOT INCLUDED) into the socket of the fixture.

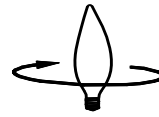
REVELATION

by UTTERMOST

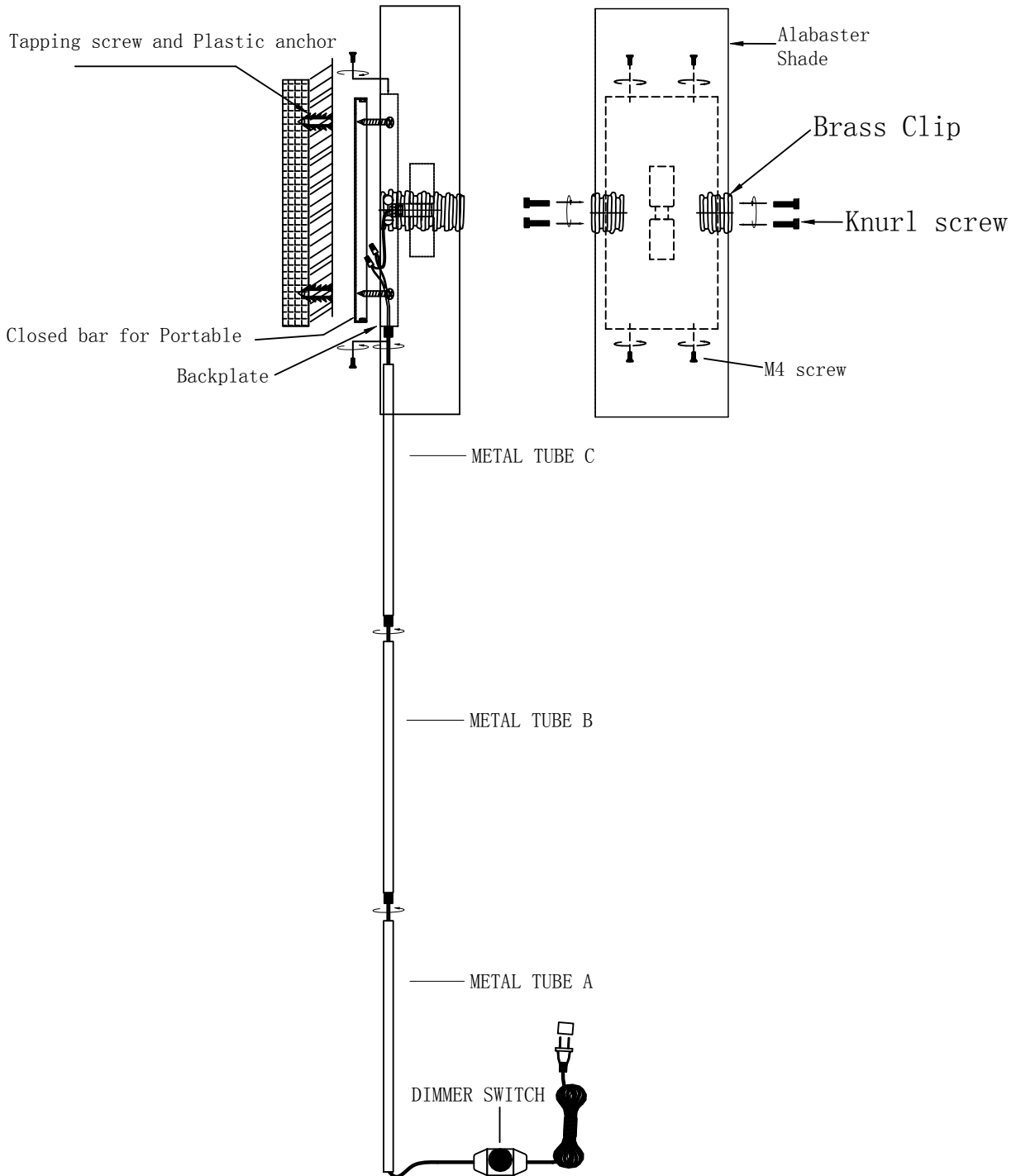
ASSEMBLY INSTRUCTIONS

Illustration for Portable version

ITEM NO.:R22558



2*4W TYPE B LED BULB
(NOT INCLUDED)



REVELATION

by UTTERMOST

ASSEMBLY INSTRUCTIONS

Parts and Hardware List

ITEM NO: R22558

A.	M4 screw	4PCS
B.	Closed Bar for Portable	1PC
C.	Tapping screw	2PCS
D.	Plastic Anchor	2PCS
E.	Knurl Screw	4PCS

WARNING: BEFORE INSTALLING, make sure the electricity supply is shut off to avoid a possible electric shock. We suggest a licensed electrician for all installations.

1. Carefully remove the parts and hardware from the carton.
2. The brass clips have already glued with the alabaster shade, please use the knurl screws to lock the alabaster shade with backplate together in brass clips position tightly.
3. Attach the backplate to fix closed bar, and secure with the M4 screws.
4. Screw the metal tube C to the backplate; screw the metal tube B to the metal tube C; screw the metal tube A to the metal tube B.
5. The Plastic Anchors and Tapping screws fasten on the wall, then the wall sconce hang on the Tapping screws.
6. Install 2*4 Watt max, Type B LED bulb (NOT INCLUDED) into the socket of the fixture.