

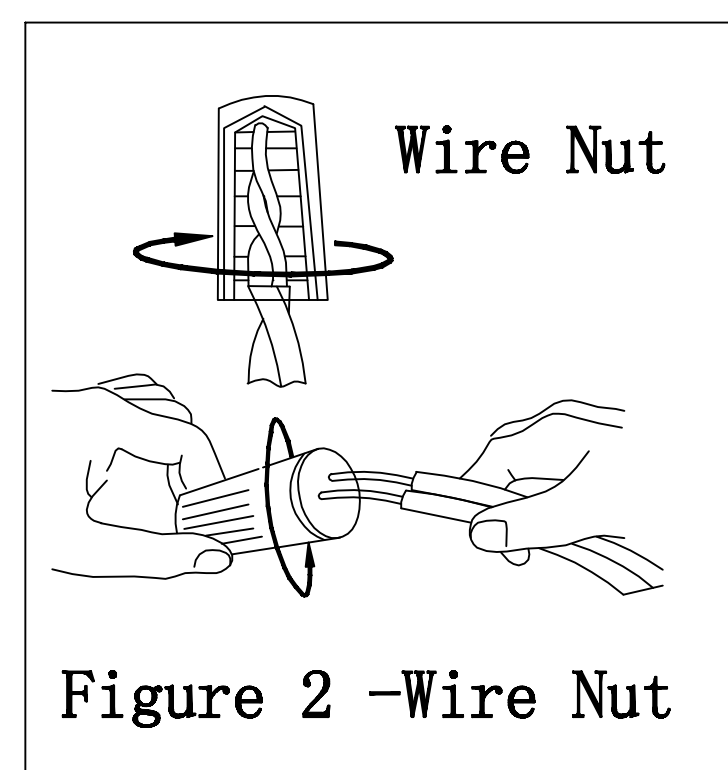
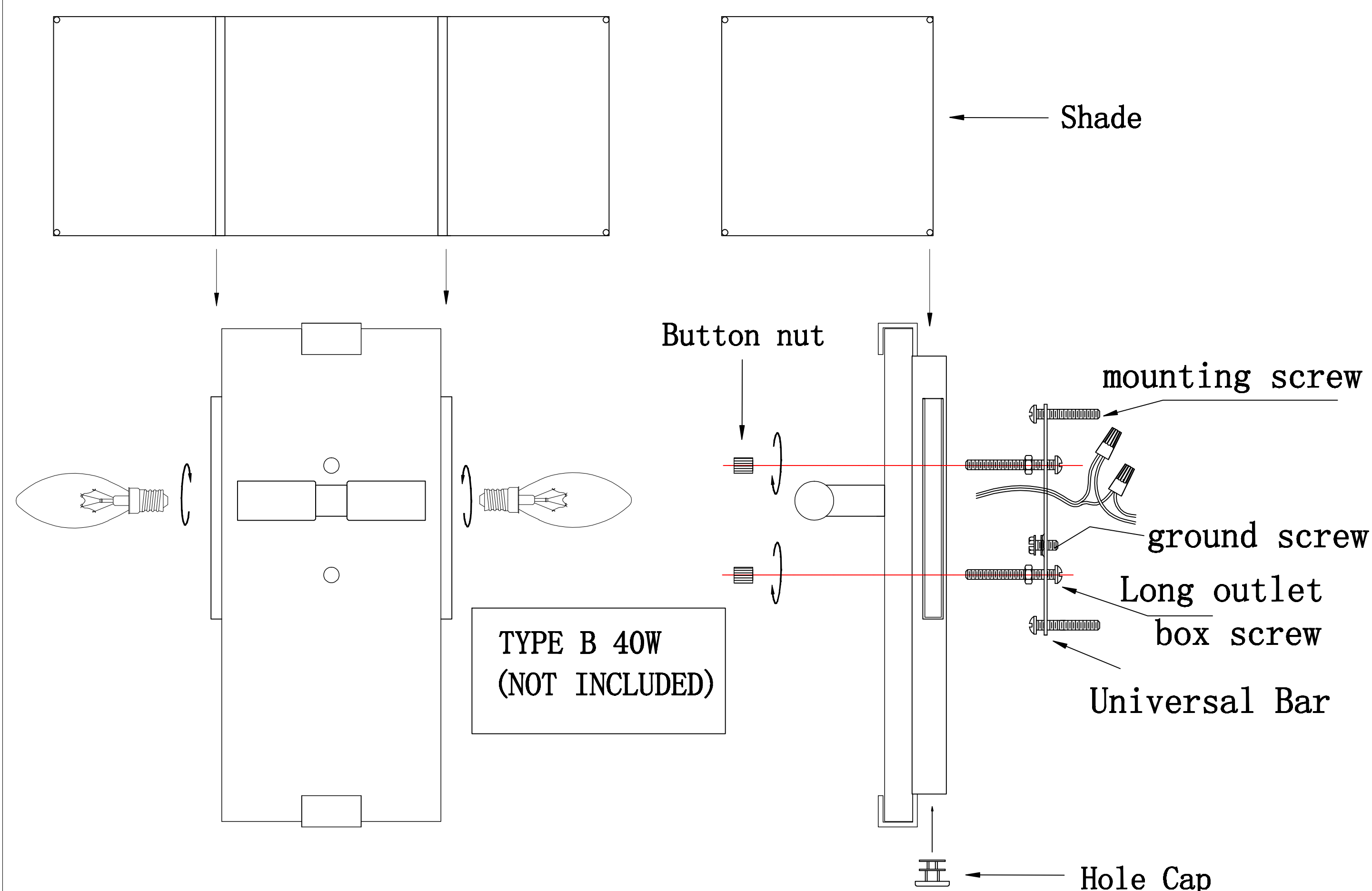
# REVELATION

by UTTERMOST

## ASSEMBLY INSTRUCTIONS

### Illustration for Fixture version

ITEM NO.:R22547



# REVELATION

by UTTERMOST

## ASSEMBLY INSTRUCTIONS

### Parts and Hardware List

ITEM NO: R22547

A.	Hole Cap	1PC
B.	Button Nut	2PCS
C.	Universal Bar	1PC
D.	Mounting Screw	2PCS
E.	Green Ground Screw	1PC
F.	Wire Nut	3PCS
G.	Outlet Box Screw	2PCS

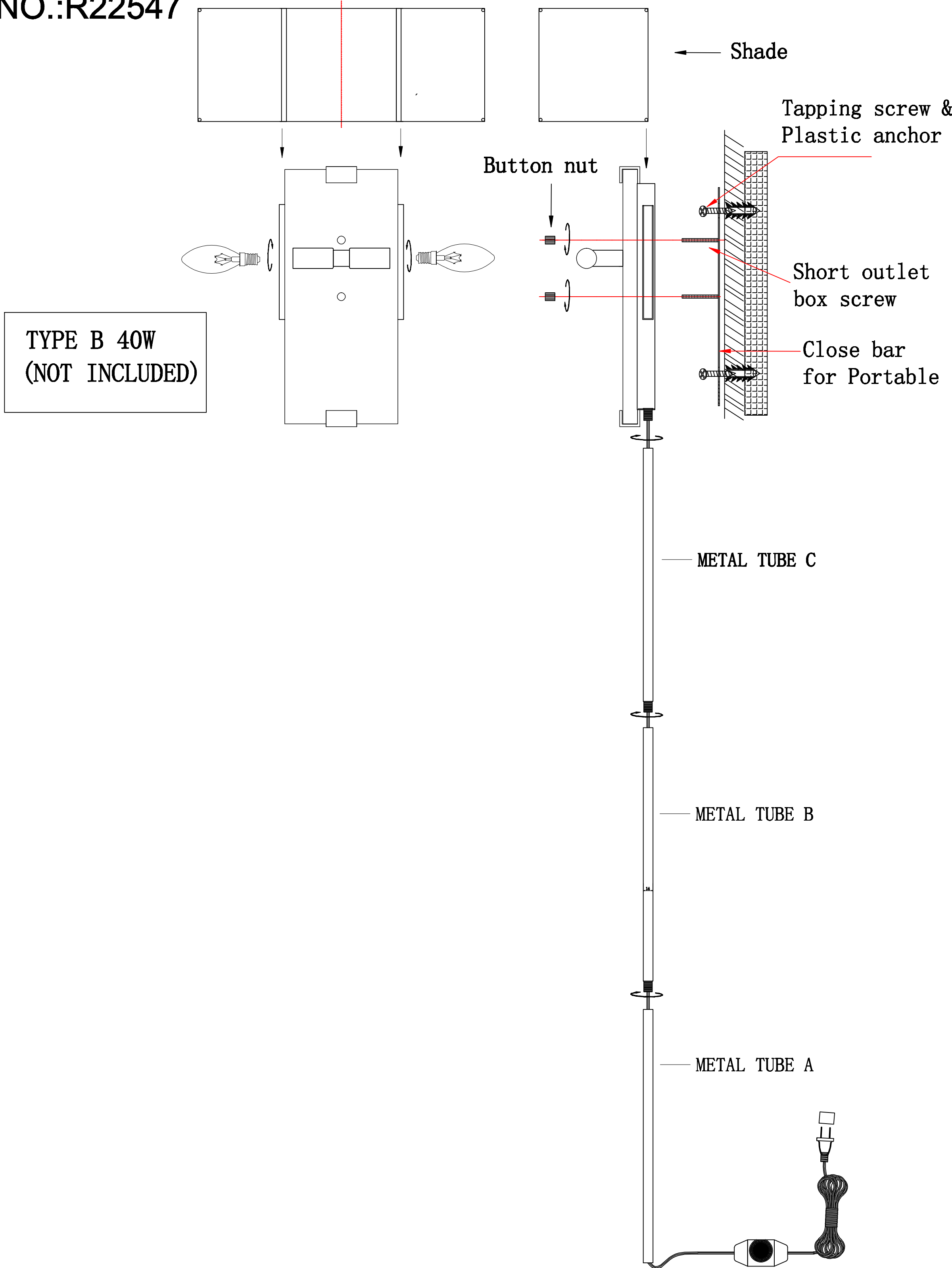
**WARNING: BEFORE INSTALLING**, make sure the electricity supply is shut off to avoid a possible electric shock. We suggest a licensed electrician for all installations.

1. Carefully remove the parts and hardware from the carton.
2. Fasten the Universal bar onto the Outlet Box using the Outlet Box Screw .
3. Install both ground wires in the Universal bar with the Green Ground Screw supplied.
4. Place the white wire, ribbed or tinted wire evenly against the white wire from the outlet box and place the black, smooth or un-tinted wire evenly against the black wire from the outlet box. (Connecting the Wires - See Figure 2)
5. Use the Mounting Screw to secure the Universal bar and Lamp Body through the Mount hole, and screw Knurl button Nuts until tight.
6. Insert the shade from top to bottom into the backplate slot.
7. Install 2\*40 Watt, Type B bulb (NOT INCLUDED) into the socket of the fixture.

REVELATION  
by UTTERMOST  
ASSEMBLY INSTRUCTIONS

Illustration for Portable version

ITEM NO.:R22547



REVELATION  
by UTTERMOST  
ASSEMBLY INSTRUCTIONS

Parts and Hardware List

ITEM NO: R22547

A.	Button Nut	2PCS
B.	Close Bar for Portable	1PC
C.	Tapping screw	2PCS
D.	Plastic Anchor	2PCS
E.	Outlet Box Screw	2PCS

**WARNING: BEFORE INSTALLING**, make sure the electricity supply is shut off to avoid a possible electric shock. We suggest a licensed electrician for all installations.

1. Carefully remove the parts and hardware from the carton.
2. The screws of close bar go through the mount holes of lamp body , and screw Knurl button Nuts until tight.
3. .Screw the metal tube C to the lamp body; screw the metal tube B to the metal tube C; screw the metal tube A to the metal tube B.
4. The Plastic Anchors and Tapping screws fasten on the wall, then the wall sconce hang on the Tapping screws.
5. Insert the shade from top to bottom into the backplate slot.
- 6.Install 2\*40 Watt, Type B bulb (NOT INCLUDED) into the socket of the fixture.