

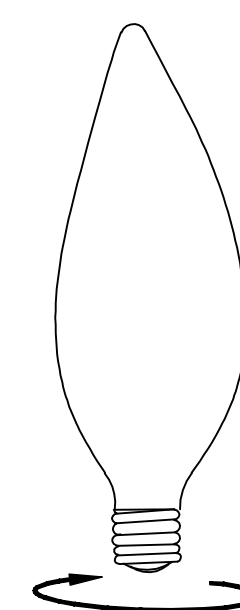
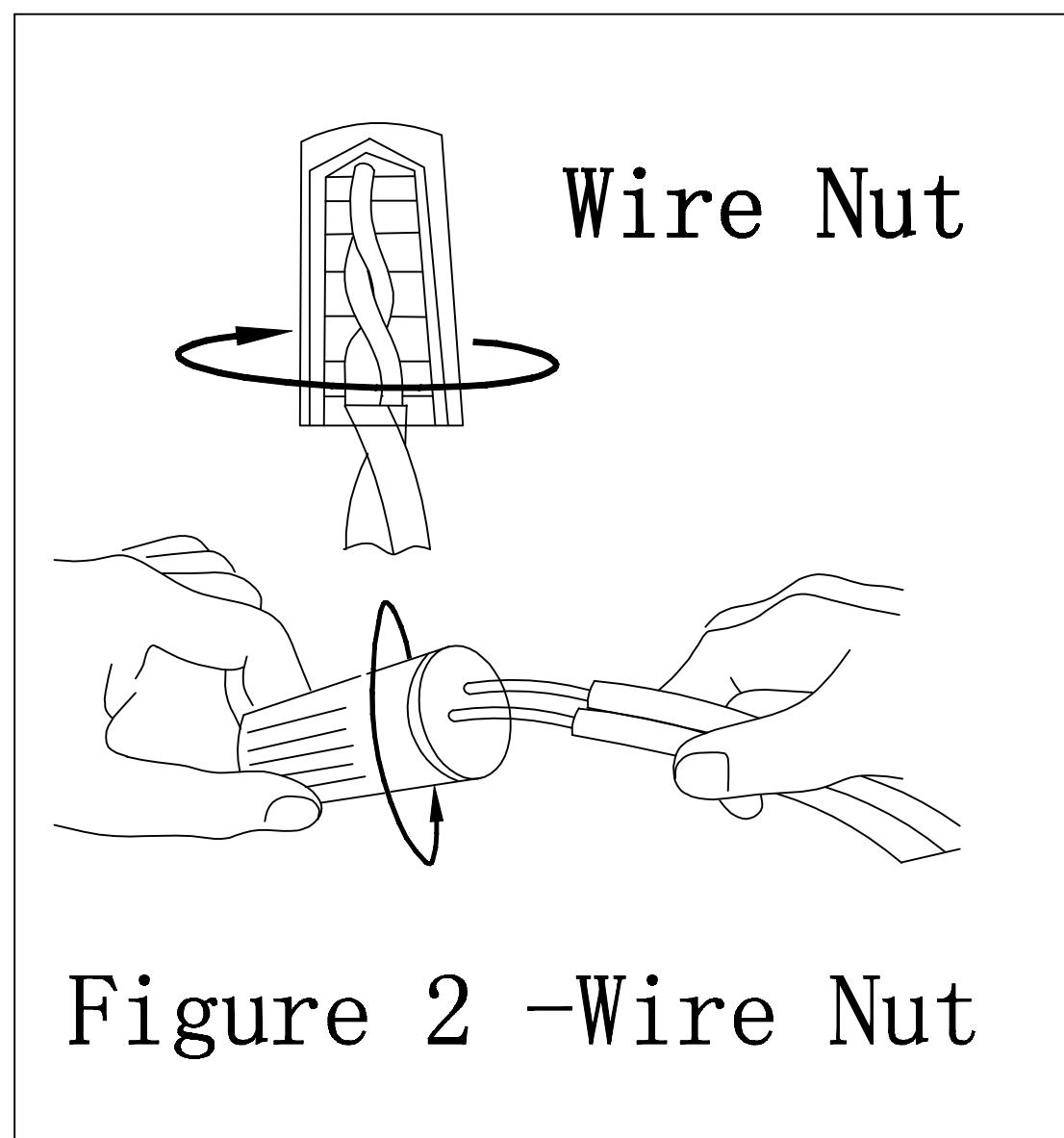
REVELATION

by UTTERMOST

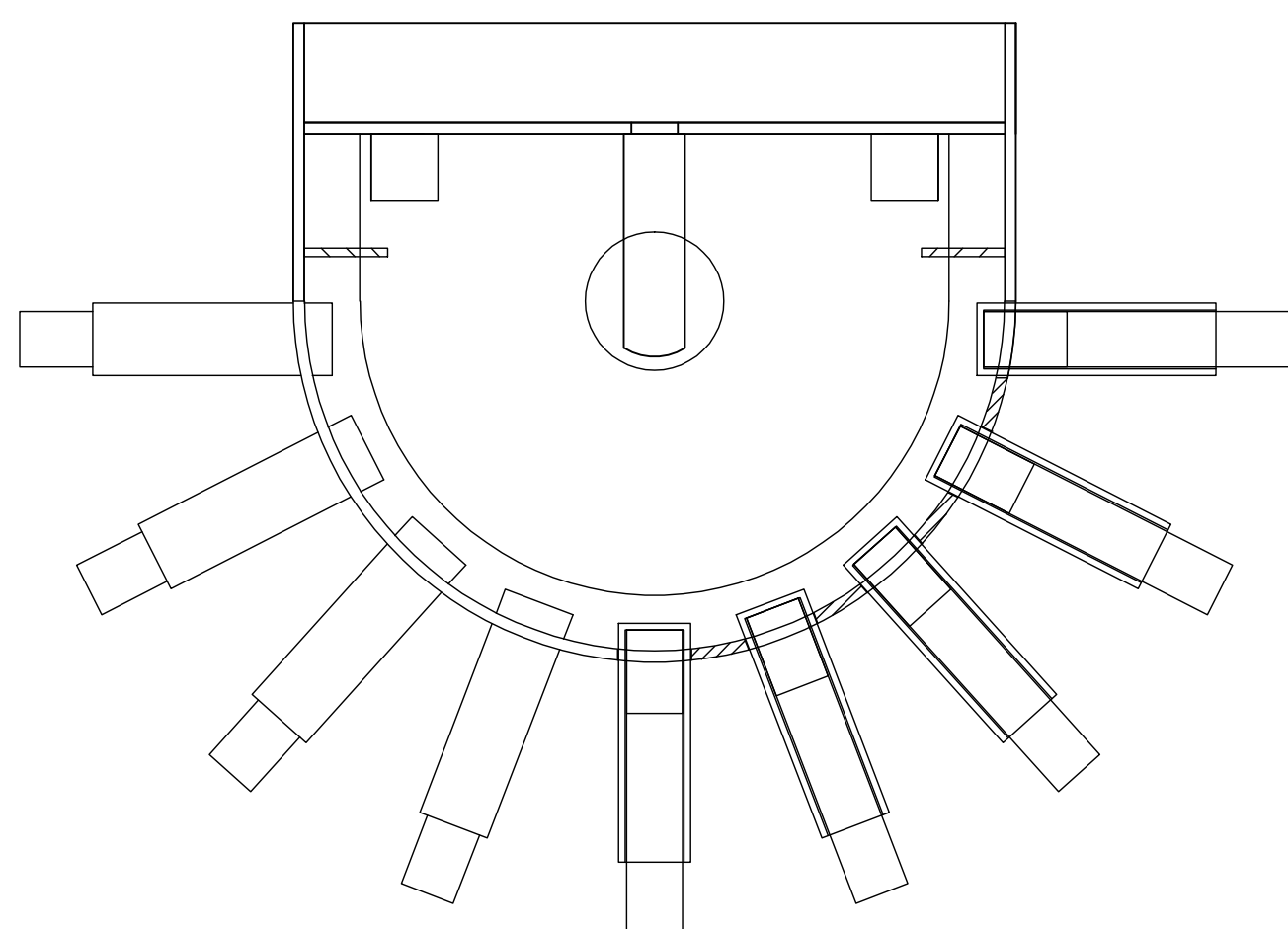
ASSEMBLY INSTRUCTIONS

Illustration

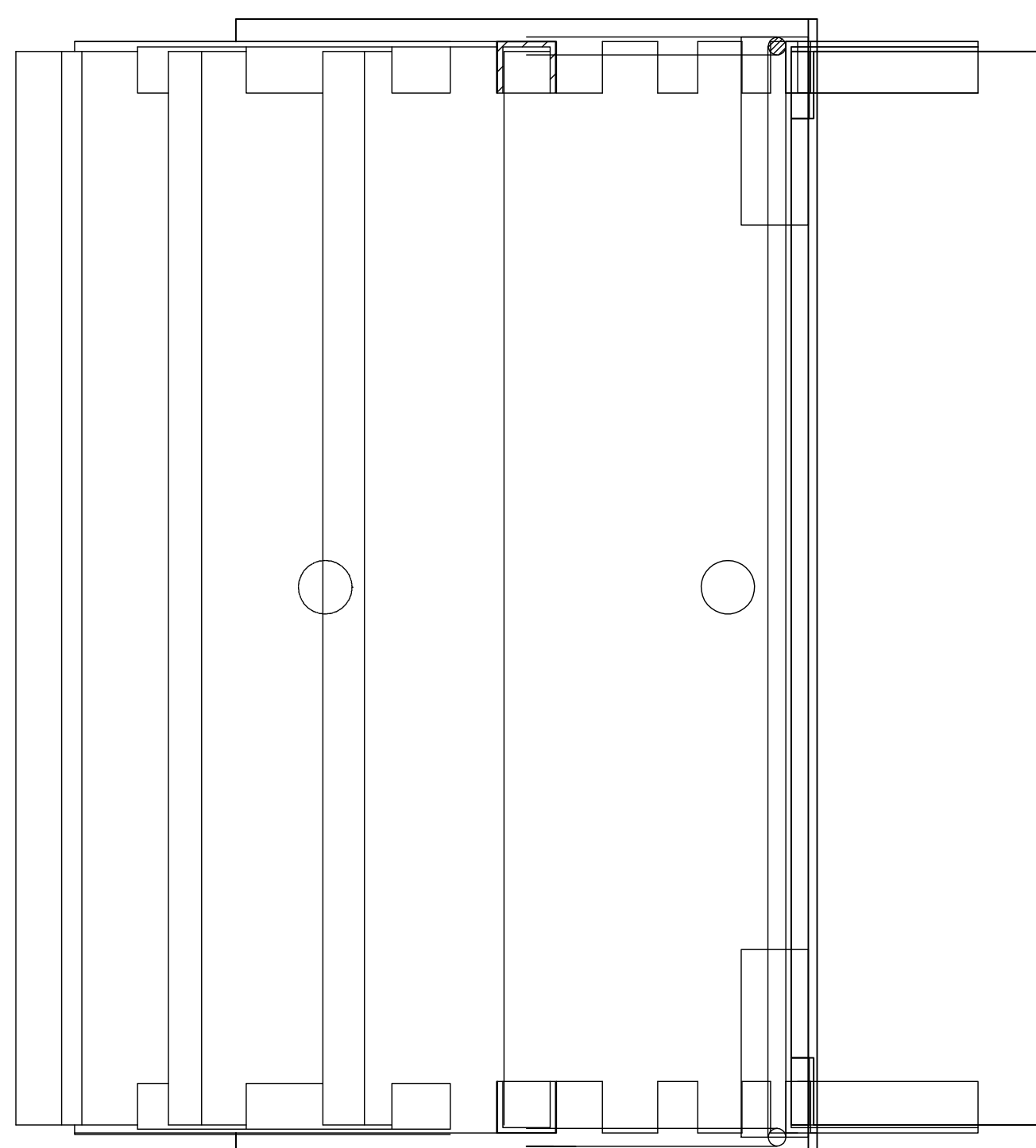
ITEM NO.:R22546



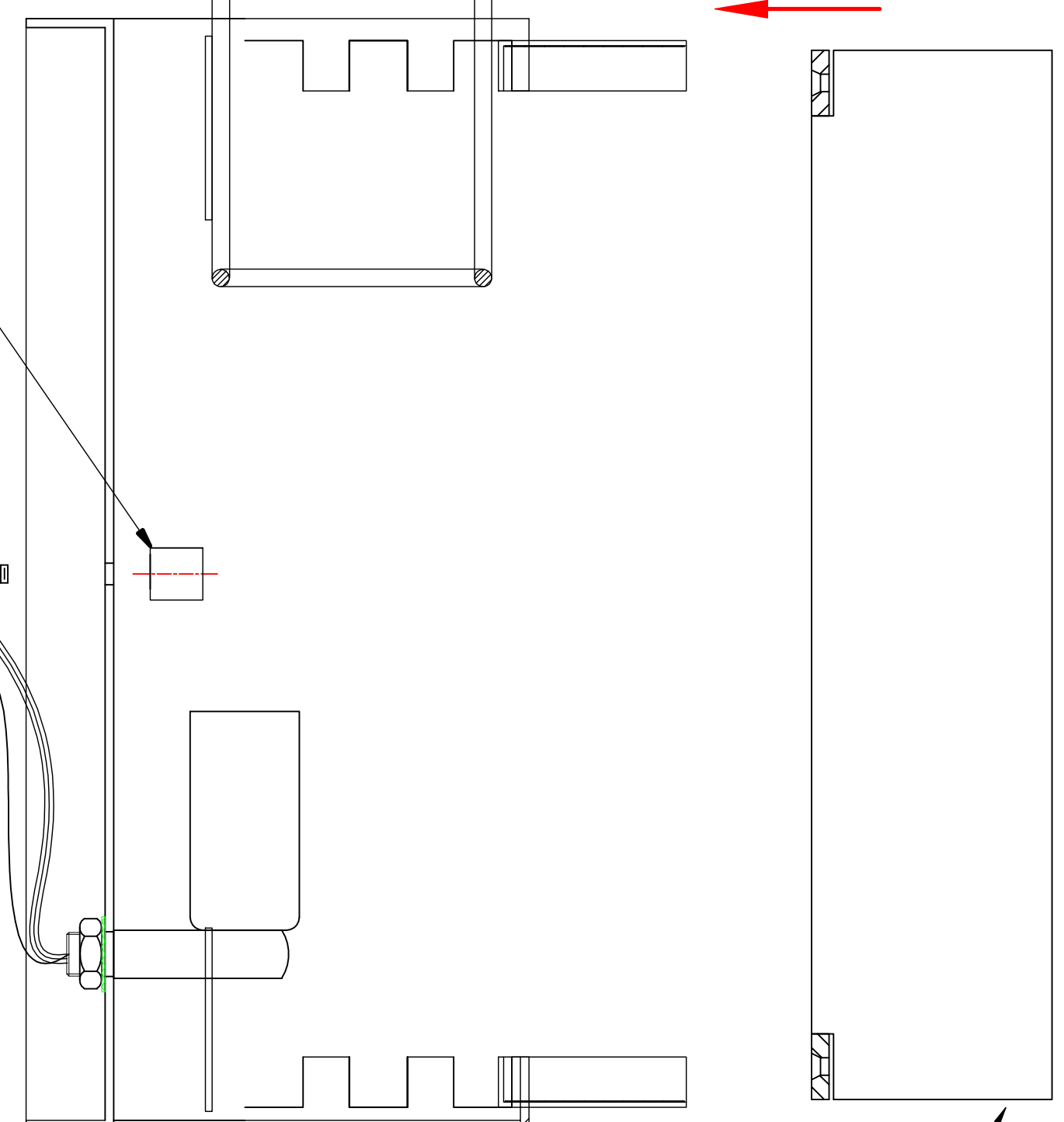
TYPE B 40W
(NOT INCLUDED)



Shade



Button nut
Wire nut
Outlet box screw
Ground screw
Mounting screw
Universal Bar



Alabaster slice

REVELATION

by UTTERMOST

ASSEMBLY INSTRUCTIONS

Parts and Hardware List

ITEM NO: R22546

A.	Shade	1PC
B.	Alabaster Slice	9PCS
C.	Universal Bar	1PC
D.	Mounting Screw	2PCS
E.	Green Ground Screw	1PC
F.	Wire Nut	3PCS
G.	Outlet Box Screw	2PCS
H.	Button Nut	2PCS

WARNING: BEFORE INSTALLING, make sure the electricity supply is shut off to avoid a possible electric shock. We suggest a licensed electrician for all installations.

1. Carefully remove the parts and hardware from the carton.
2. Fasten the Universal bar onto the Outlet Box using the Outlet Box Screw .
3. Install both ground wires in the Universal bar with the Green Ground Screw supplied.
4. Place the white wire, ribbed or tinted wire evenly against the white wire from the outlet box and place the black, smooth or un-tinted wire evenly against the black wire from the outlet box. (Connecting the Wires - See Figure 2)
- 5.Use the Mounting Screw to secure the Universal bar and Lamp Body through the Mount hole, and screw Button Nuts until tight.
6. Insert the alabaster slices into the metal slot of the fixture.
7. Insert the shade into the inside of fixture from top to bottom.
- 7.Install 40 Watt, Type B bulb (NOT INCLUDED) into the socket of the fixture.