



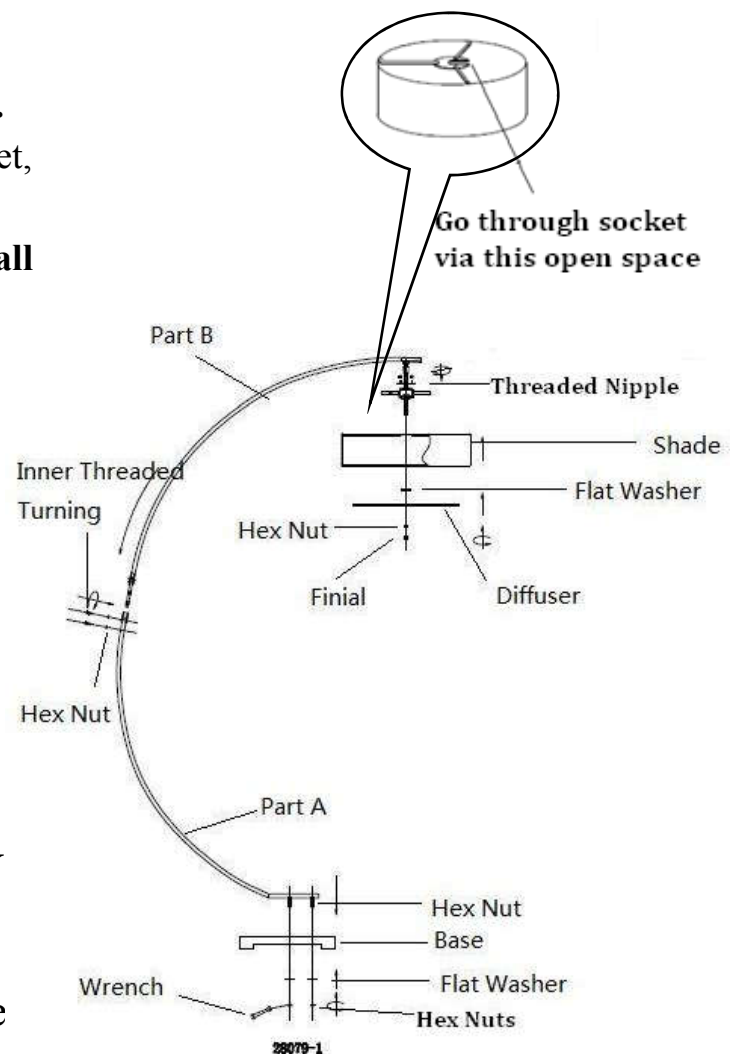
UTTERMOST

ASSEMBLY INSTRUCTIONS

STYLE# 28079-1

Careful unpack all lamp parts from the carton.

1. Carefully remove all parts from the carton.
2. Place the base in an upright position on the floor.
3. Position the **Part A** onto the **Base**, use **wrench** to tighten from bottom of base.
4. Position the tube **Part B** against **Part A**, first to tighten with Hex Nut. Then put **inner threaded turning** on to cover the hex.
5. Bring the **Shade** to right under the **Socket** set. Line the **Shade** up to go through the **Socket** set, but make sure via the open space facing slot on the spider washer. Thread the **Mounting Ball** on the top of **Socket** set to secure them. Hand tighten until snug.
6. Place **Flat Washer** and **Diffuser** onto the **Stem**, secure by thread **Hex Nut** onto Stem. Hand tighten until snug.
7. Thread **Finial** onto the end of the **Stem**, hand tighten until snug.
8. Install correct Bulbs referring to fixture markings and /or labels for maximum wattage. (Not Included)



IMPORTANT SAFETY INSTRUCTIONS

This Floor lamp has a polarized plug (one blade is wider than the other) as a safety feature to reduce the risk of electric shock. This plug will fit in a polarized outlet only one way. If the plug does not fit fully in the outlet, reverse the plug. If it still does not fit, contact a qualified electrician. Never use with an extension cord unless plug can be fully inserted. Do not attempt to defeat this safety feature.