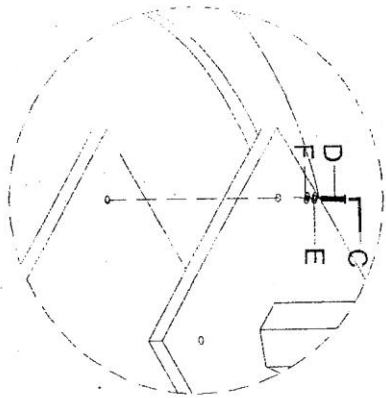
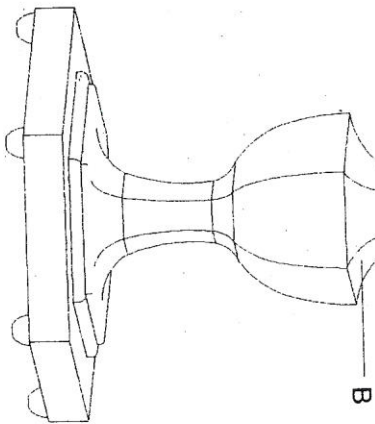
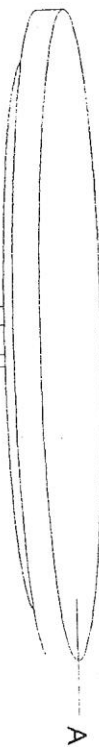




UTTERMOST



Assembly Instruction

Item#24945

1. Take the parts carefully out of the carton, and place them on a flat surface, and make sure the parts will not be damaged.
2. Put the Top(A) upside down on a clean and soft surface, then put the post(B) upside down, and match the square panel with the top.
3. Insert the Bolt(D). Lock washer(E) and Flat washer(F) into the holes and tight them by Allen wrench(A).

Parts and Hardware included:

Main parts:	Qty
A Top	1pc
B Post	1pc

Hardware:	Qty
C Allen Wrench	1pc
D Allen Bolt	4pcs
E Lock Washer	4pcs
F Flat Washer	4pcs

To clean, wipe with soft dry cloth.