

UTTERMOST

ASSEMBLY INSTRUCTIONS

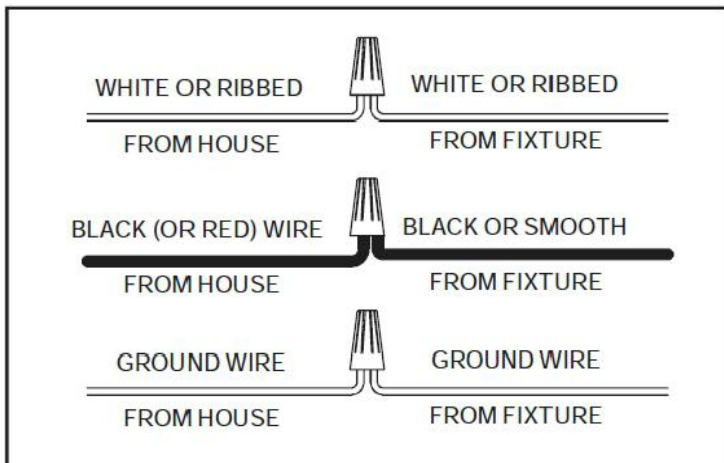
STYLE#: 21348

WARNING: TO AVOID RISK OF ELECTRICAL SHOCK, BE SURE TO SHUT OFF POWER BEFORE INSTALLING OR SERVICING THIS FIXTURE.

Carefully unpack all lamp parts from carton. We suggest a licensed electrician for all fixture installations.

1. Take the lamp carefully out of the Carton, and place on a flat surface.
2. Be sure power to the installation point is OFF. Follow the steps below for assembly.
3. Adjust the length of wire needed for your installation, remove excess. Determine the number of Rods to be assembled to the **Fixture Body** as needed for your hanging height. Pull the Supply Wire with Ground Wire through the selected **Rods** and **Swivel**. Thread the **Rods &** connect **Part A**. Hand tighten.
4. Pass the supply wire through the **Universal Bar** assembly, secure the **Universal Bar** to the Outlet Box with Outlet Box Screws.
5. The power supply wire consists of three wires, one black wire, one white wire and one silver ground wire. Connect the wires as shown.
 - A. Connect the House Ground Wire to the Fixture Ground Wire.
 - B. Connect the House White (or Ribbed) Wire to the Fixture Supply Wire (White or Ribbed Side).
 - C. Connect the House Black (or Red) Wire to the Fixture Supply Wire (Black or Smooth Side).
 - D. Wrap each connected wire with Wire Connector and carefully stuff all of the connected wires into the Outlet Box.
6. Place the **Nipple** on top of the **Socket Assembly** into the Holes of **Metal Frame** and secure the metal frame with **Part A** using the hand tool **Wrench** to tighten until snug.
7. Fasten the **Universal Bar** to the **Canopy**. Thread **Mounting Screws** to secure it. Tighten until snug with screwdrivers
8. Install the correct **Bulb** (Bulb Not Included) into the **Socket** until snug.

Your installation is completed now. Restore electricity.

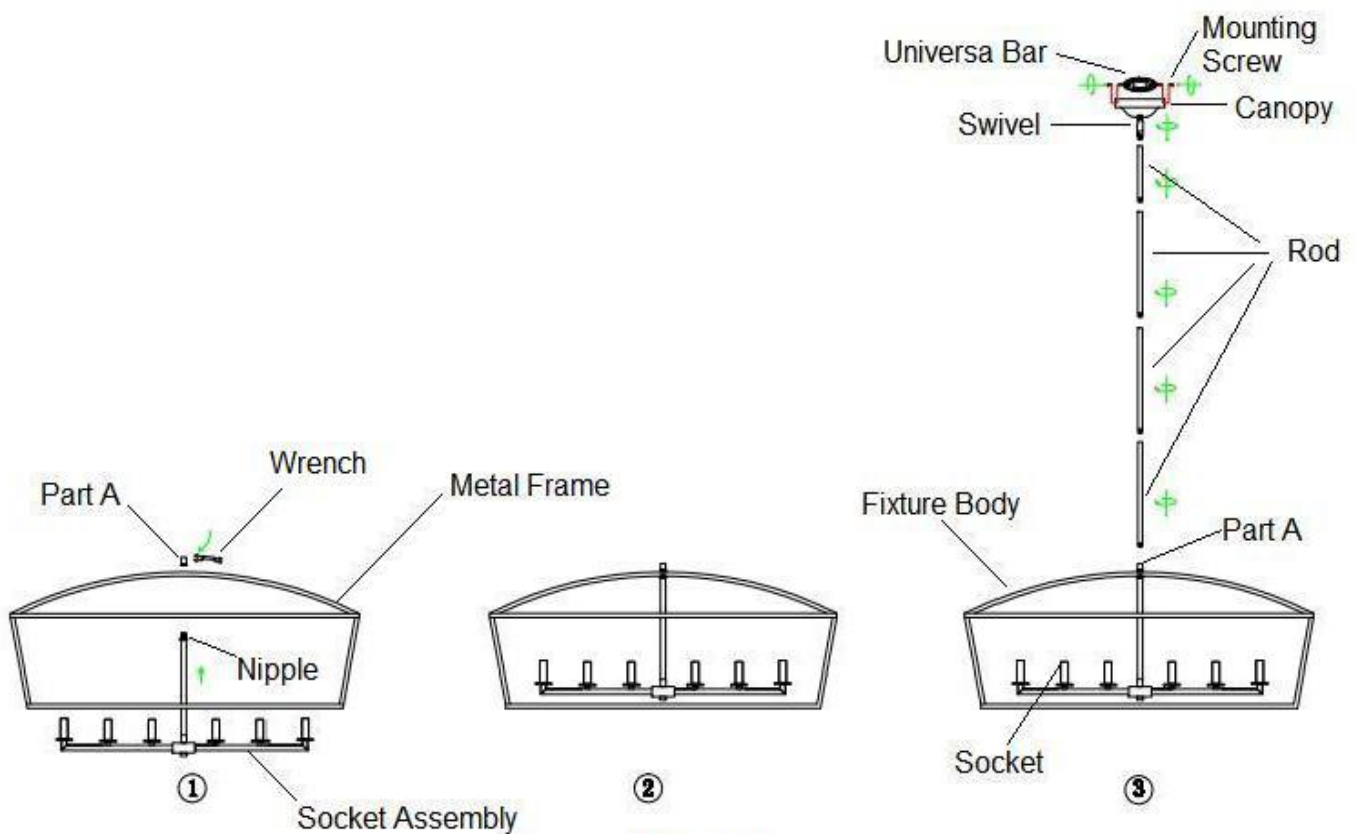


UTTERMOST

ASSEMBLY INSTRUCTIONS

STYLE#: 21348

WARNING: TO AVOID RISK OF ELECTRICAL SHOCK, BE SURE TO SHUT OFF POWER BEFORE INSTALLING OR SERVICING THIS FIXTURE.



21348